

Population of South Kitsap School District, Washington (Unified School District)

Map of Population by County Subdivision in South Kitsap School District

Population Density Population

Population Density Population by County Subdivision

#1

Population per square mile of land (excluding water areas):

550/mi²

610/mi²

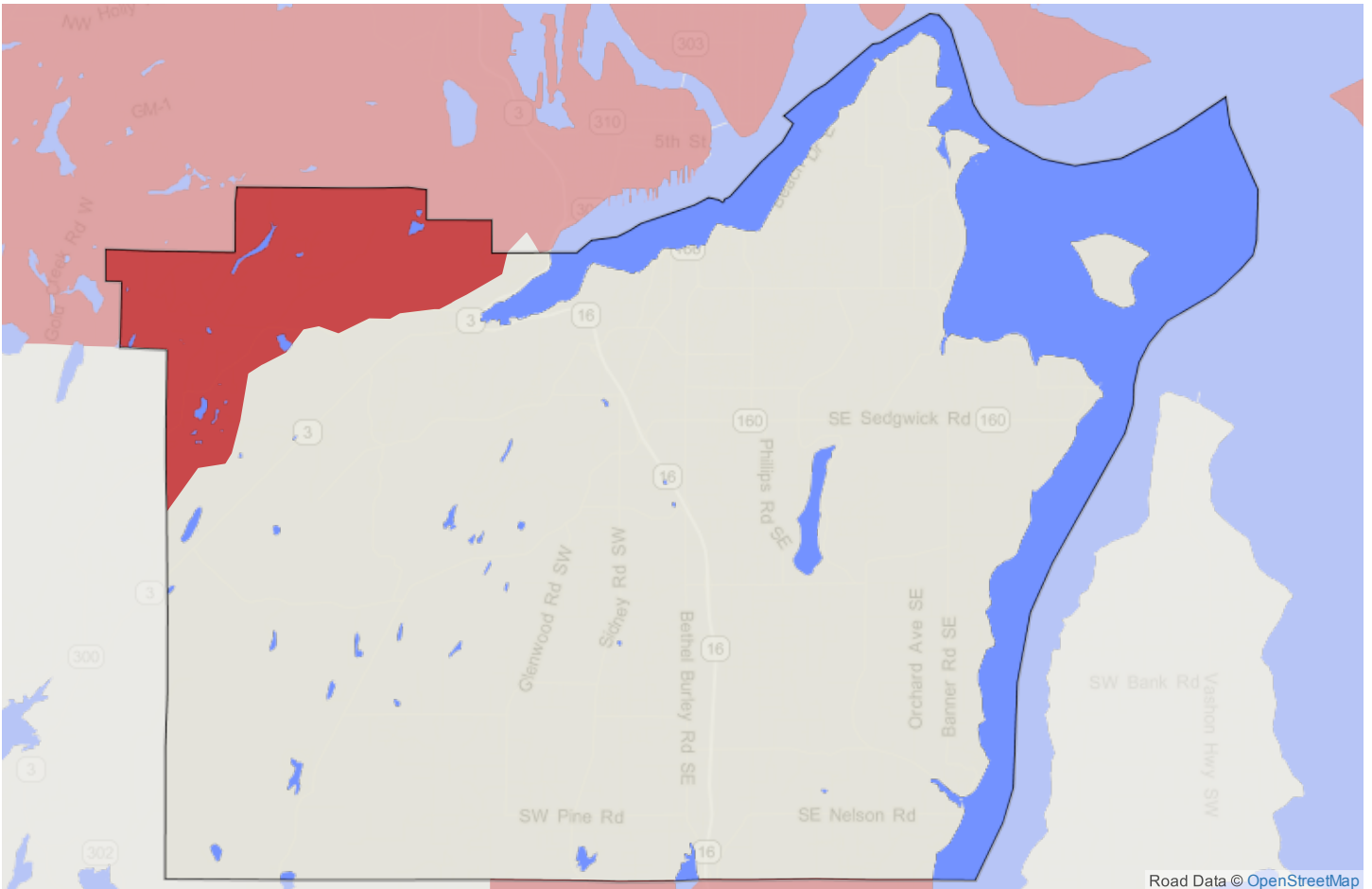
660/mi²

710/mi²

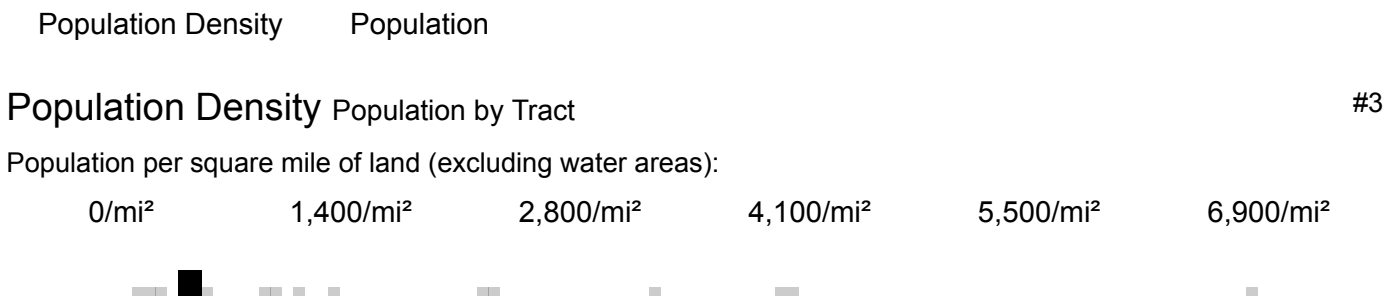
760/mi²

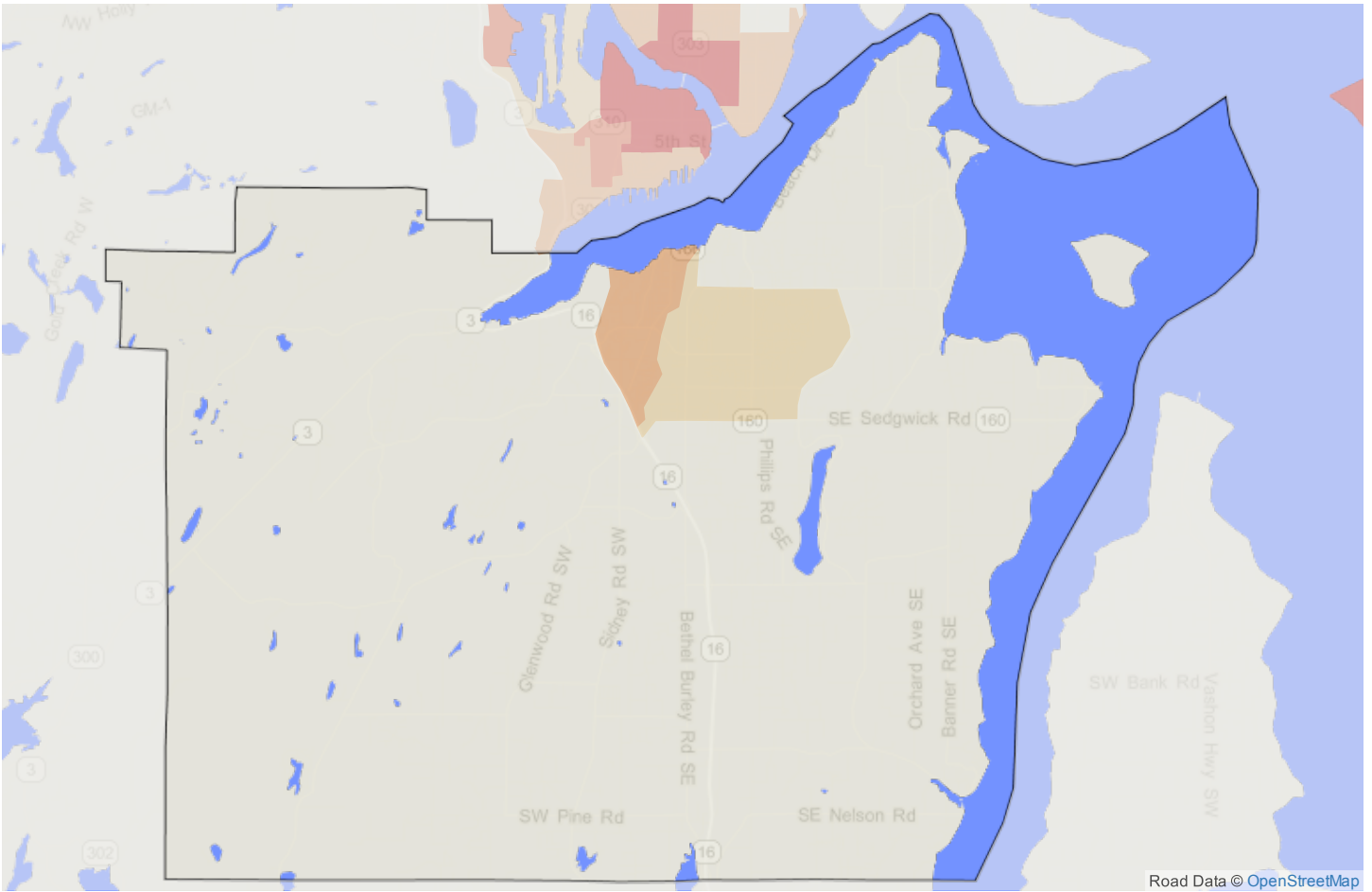
820/mi²





Map of Population by Tract in South Kitsap School District





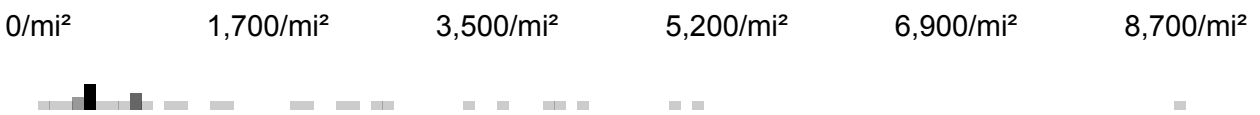
Map of Population by Block Group in South Kitsap School District

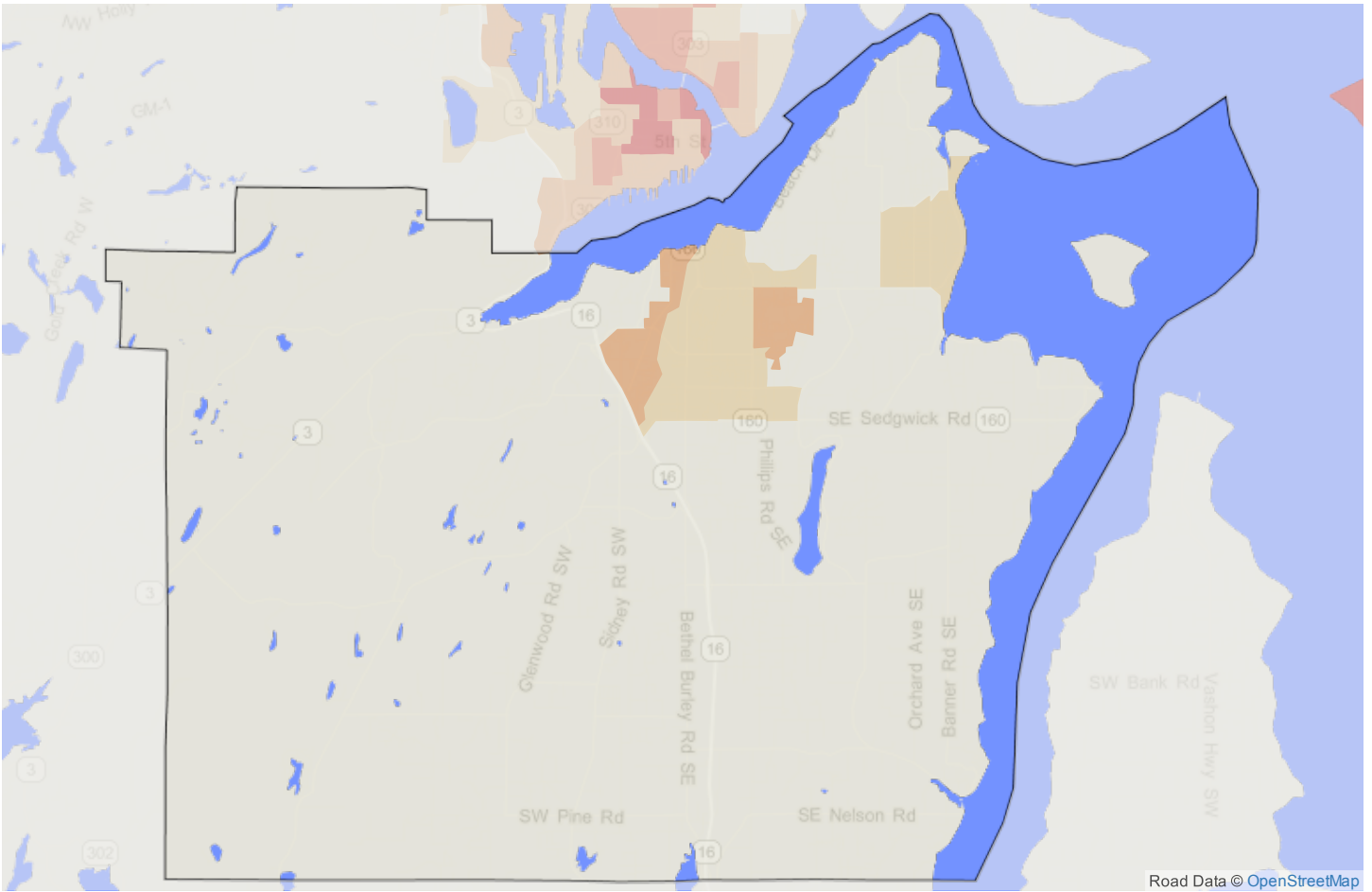
Population Density Population

Population Density Population by Block Group

#5

Population per square mile of land (excluding water areas):





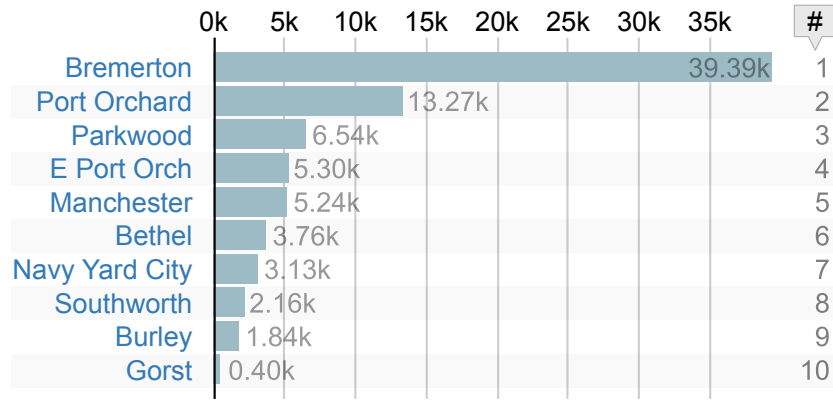
Population by Place in South Kitsap School District

There are 10 places that are fully or partially contained within South Kitsap School District (8 fully and 2 partially). This section compares all 10 of those to each other.

Total Population by Place

#7

Scope: population of selected places in South Kitsap School District



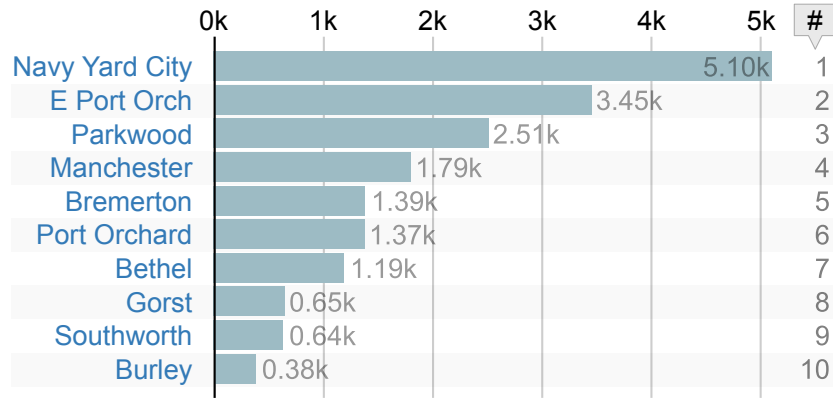
rank of place out of 10 by population

Population Density by Place

#8

People per square mile (excluding waters).

Scope: population of selected places in South Kitsap School District



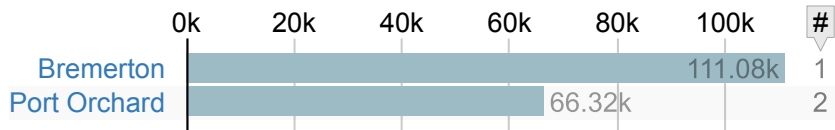
rank of place out of 10 by population density

Population by County Subdivision in South Kitsap School District

There are 2 county subdivisions that are fully or partially contained within South Kitsap School District (0 fully and 2 partially). This section compares all 2 of those to each other.

Total Population by County Subdivision #9

Scope: population of selected county subdivisions in South Kitsap School District

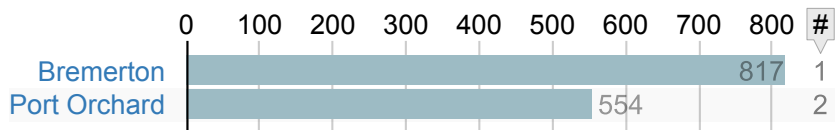


rank of county subdivision out of 2 by population

Population Density by County Subdivision #10

People per square mile (excluding waters).

Scope: population of selected county subdivisions in South Kitsap School District



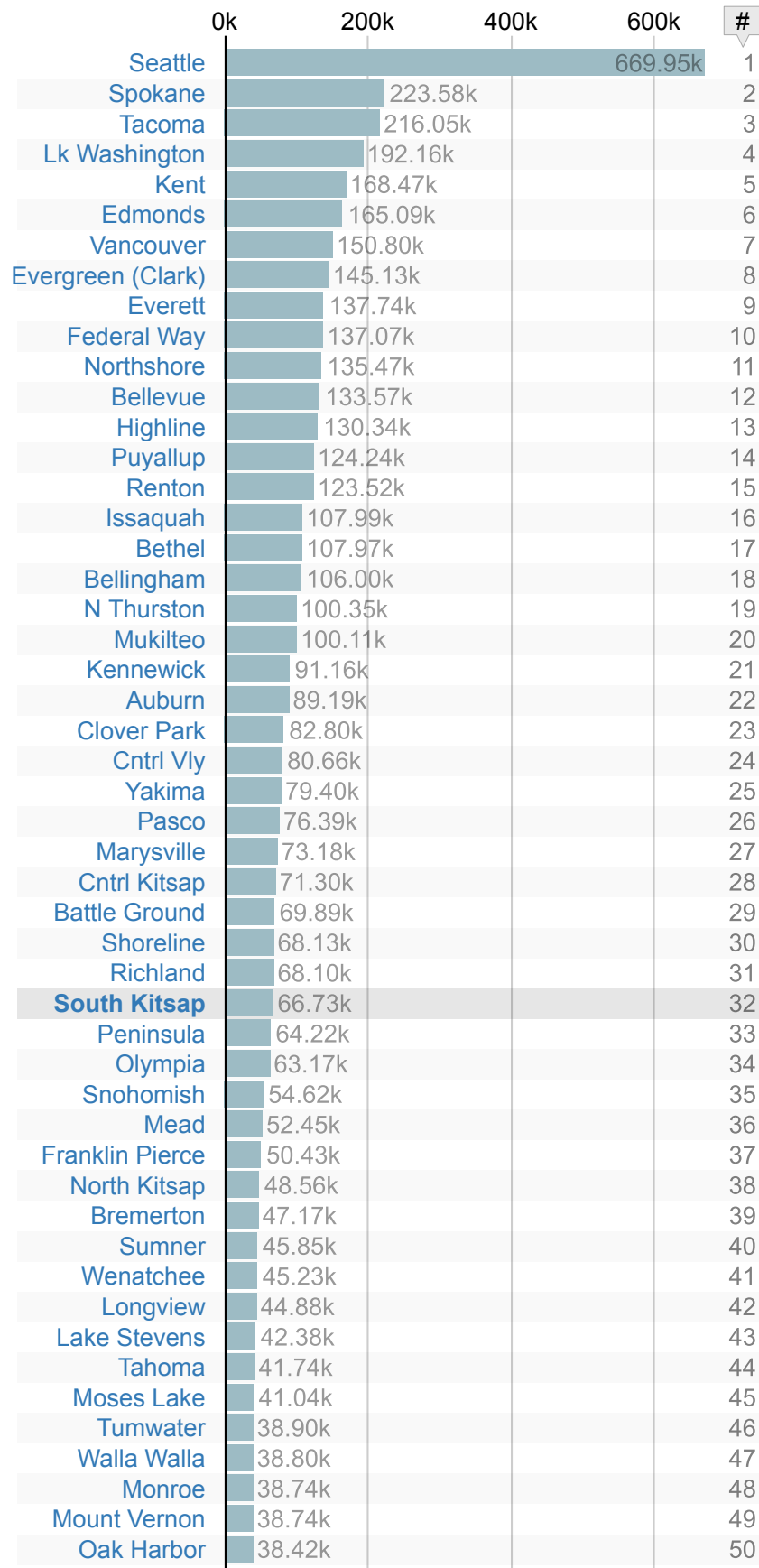
rank of county subdivision out of 2 by population density

Population by Unified School District in Washington

There are 295 unified school districts in Washington. This section compares South Kitsap School District to the 50 most populous unified school districts in Washington. The least populous of the compared unified school districts has a population of 38,419.

Total Population by Unified School District #11

Scope: population of South Kitsap School District and selected other unified school districts in Washington



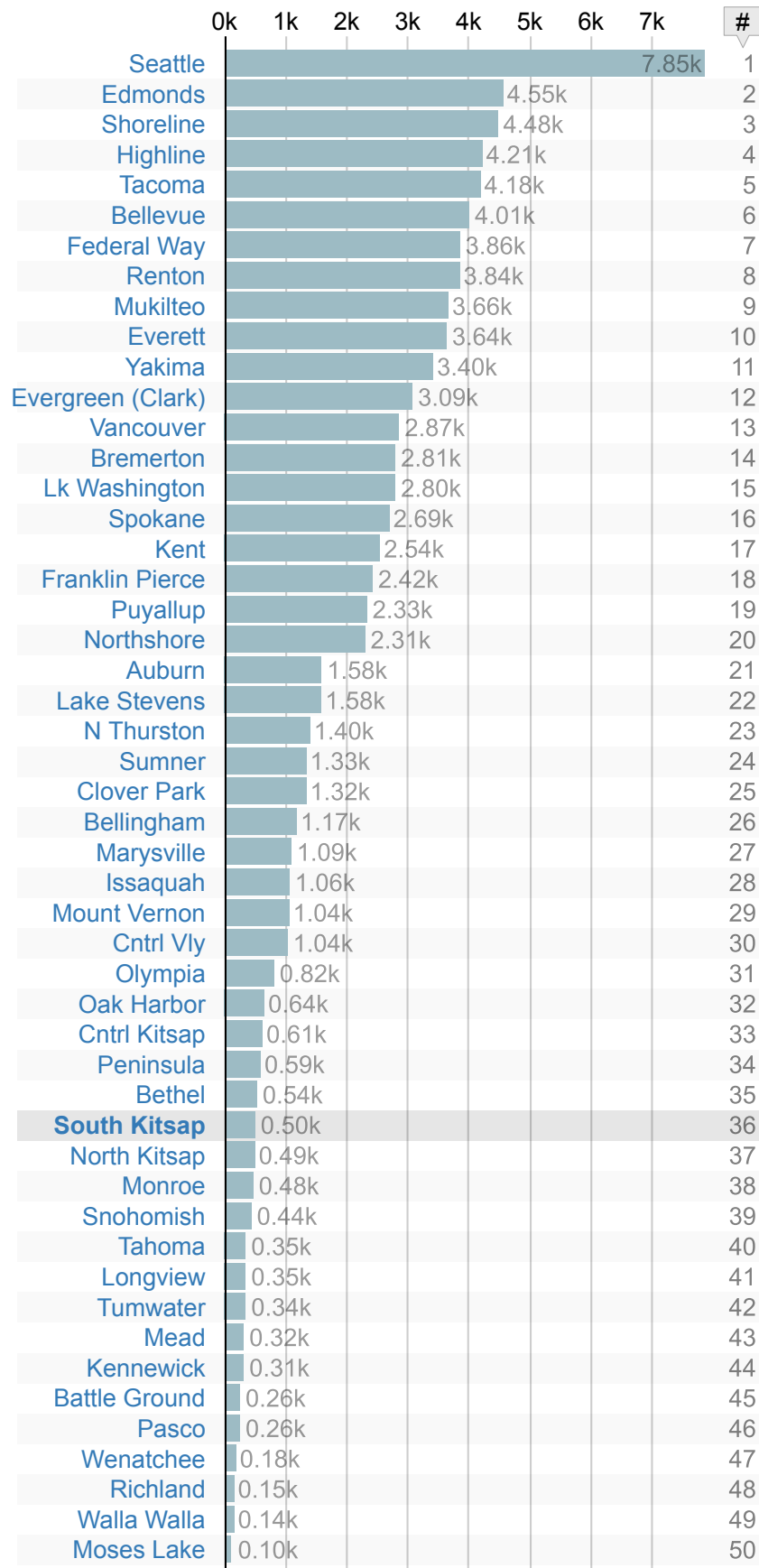
rank of unified school district out of 50 by population

Population Density by Unified School District

#12

People per square mile (excluding waters).

Scope: population of South Kitsap School District and selected other unified school districts in Washington



rank of unified school district out of 50 by population density

Definitions

This page reports on the population distribution in South Kitsap School District, both in terms of raw head counts, and in terms of population density per square mile.

- **Population:** count of all residents of the given entity at the time of the survey, excluding visitors
- **Population Density:** population divided by the total land area of the entity (i.e., excluding water areas contained in the entity)

For additional information about the data presented on this site, including our sources, please see the [About Page \(/about#data\)](#).

More Topics to Explore

Demographics

[Population \(/school-district/Washington/South-Kitsap-School-District/Population\)](#)

[Age and Sex \(/school-district/Washington/South-Kitsap-School-District/Age-and-Sex\)](#)

[Race and Ethnicity \(/school-district/Washington/South-Kitsap-School-District/Race-and-Ethnicity\)](#)

[Household Types \(/school-district/Washington/South-Kitsap-School-District/Household-Types\)](#)

[Marital Status \(/school-district/Washington/South-Kitsap-School-District/Marital-Status\)](#)

[National Origin \(/school-district/Washington/South-Kitsap-School-District/National-Origin\)](#)

[Ancestry \(/school-district/Washington/South-Kitsap-School-District/Ancestry\)](#)

[Languages \(/school-district/Washington/South-Kitsap-School-District/Languages\)](#)

Income

[Household Income \(/school-district/Washington/South-Kitsap-School-District/Household-Income\)](#)

[Employment Status \(/school-district/Washington/South-Kitsap-School-District/Employment-Status\)](/school-district/Washington/South-Kitsap-School-District/Employment-Status)

[Food Stamps \(/school-district/Washington/South-Kitsap-School-District/Food-Stamps\)](/school-district/Washington/South-Kitsap-School-District/Food-Stamps)

[Occupations \(/school-district/Washington/South-Kitsap-School-District/Occupations\)](/school-district/Washington/South-Kitsap-School-District/Occupations)

[Industries \(/school-district/Washington/South-Kitsap-School-District/Industries\)](/school-district/Washington/South-Kitsap-School-District/Industries)

[Sectors \(/school-district/Washington/South-Kitsap-School-District/Sectors\)](/school-district/Washington/South-Kitsap-School-District/Sectors)

Education

[Educational Attainment \(/school-district/Washington/South-Kitsap-School-District/Educational-Attainment\)](/school-district/Washington/South-Kitsap-School-District/Educational-Attainment)

[School Enrollment \(/school-district/Washington/South-Kitsap-School-District/School-Enrollment\)](/school-district/Washington/South-Kitsap-School-District/School-Enrollment)

More Maps to Explore

[Cities](#)

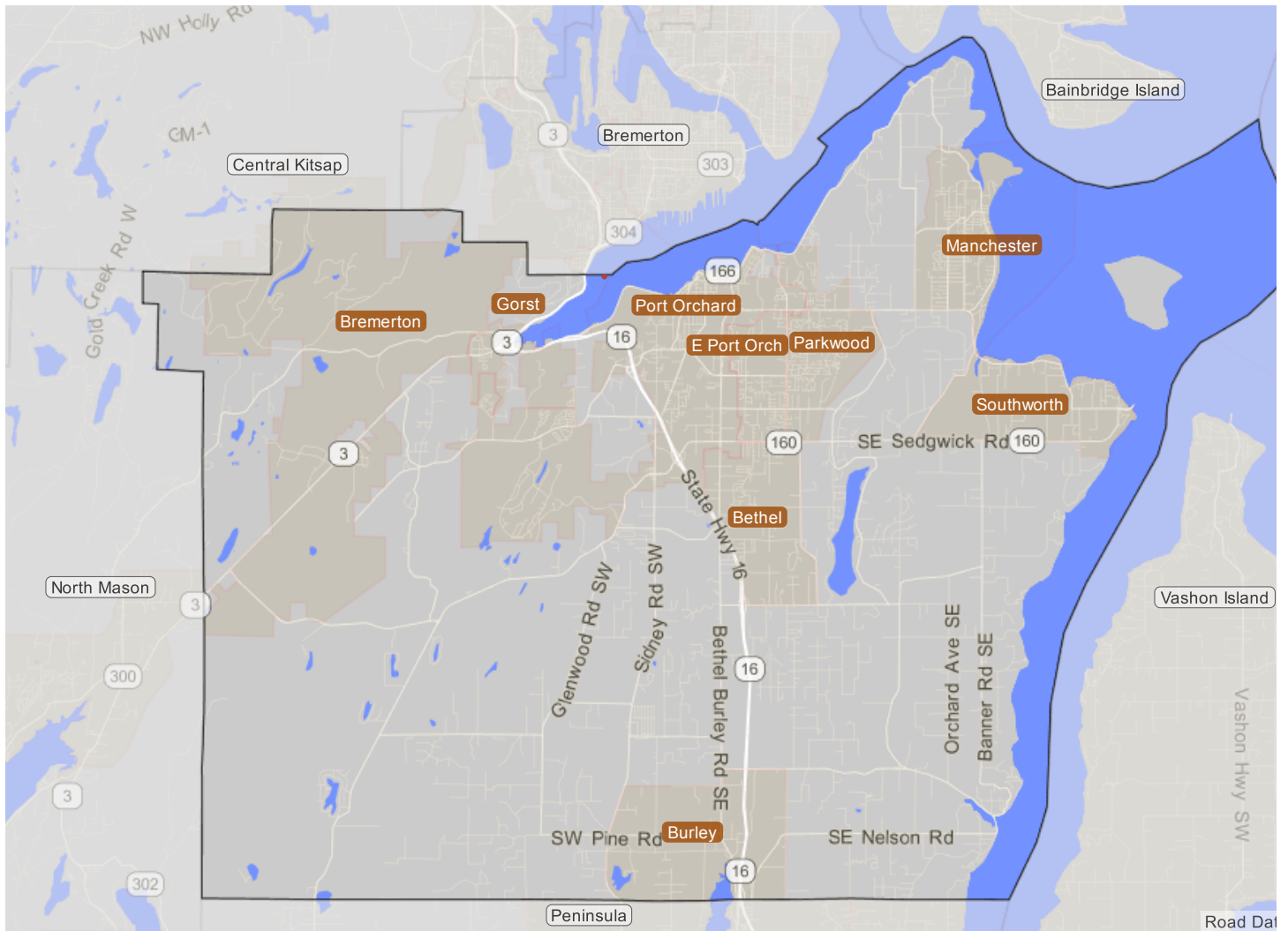
[ZIP Codes](#)

[State House Districts](#)

[State Senate Districts](#)

[Tracts](#)

[Block Groups](#)

**State:**

Washington (</state/Washington/Overview>)

County:

Kitsap (</county/Washington/Kitsap-County/Overview>)

Metro Area:

Bremerton Area (</metro-area/Washington/Bremerton/Overview>)

Cities:

Bremerton (</place/Washington/Bremerton/Overview>), Port Orchard (</place/Washington/Port-Orchard/Overview>)

Unincorporated Places:

Bethel (</place/Washington/Bethel/Overview>), Burley (</place/Washington/Burley/Overview>), East Port Orchard (</place/Washington/East-Port-Orchard/Overview>), Gorst (</place/Washington/Gorst/Overview>), Manchester (</place/Washington/Manchester/Overview>), Navy Yard City (</place/Washington/Navy-Yard-City/Overview>), Parkwood (</place/Washington/Parkwood/Overview>), Southworth (</place/Washington/Southworth/Overview>)

ZIP Codes:

98110 (/zip/98110/Overview), 98312 (/zip/98312/Overview), 98314 (/zip/98314/Overview), 98329 (/zip/98329/Overview), 98337 (/zip/98337/Overview), 98353 (/zip/98353/Overview), 98359 (/zip/98359/Overview), 98366 (/zip/98366/Overview), 98367 (/zip/98367/Overview), 98528 (/zip/98528/Overview)

Congressional District:

WA-6 (/congressional-district/Washington/Congressional-District-6/Overview)

State Senate Districts:

WA-26 (/state-upper-legislative-district/Washington/State-Senate-District-26/Overview), WA-35 (/state-upper-legislative-district/Washington/State-Senate-District-35/Overview)

State House Districts:

WA-26 (/state-lower-legislative-district/Washington/State-House-District-26/Overview), WA-35 (/state-lower-legislative-district/Washington/State-House-District-35/Overview)

Neighboring Unified School Districts:

Bainbridge Island (/school-district/Washington/Bainbridge-Island-School-District/Overview), Bremerton (/school-district/Washington/Bremerton-School-District/Overview), Central Kitsap (/school-district/Washington/Central-Kitsap-School-District/Overview), North Mason (/school-district/Washington/North-Mason-School-District/Overview), Peninsula (/school-district/Washington/Peninsula-School-District/Overview), Seattle (/school-district/Washington/Seattle-School-District/Overview), Vashon Island (/school-district/Washington/Vashon-Island-School-District/Overview)

Nearby Unified School Districts:

Federal Way (/school-district/Washington/Federal-Way-School-District/Overview), Fife (/school-district/Washington/Fife-Public-Schools/Overview), Grapeview (/school-district/Washington/Grapeview-School-District/Overview), Highline (/school-district/Washington/Highline-School-District/Overview), Mercer Island (/school-district/Washington/Mercer-Island-School-District/Overview), Pioneer (/school-district/Washington/Pioneer-School-District/Overview), Renton (/school-district/Washington/Renton-School-District/Overview), Tacoma (/school-district/Washington/Tacoma-Public-Schools/Overview), Tukwila (/school-district/Washington/Tukwila-School-District/Overview), University Place (/school-district/Washington/University-Place-School-District/Overview)
